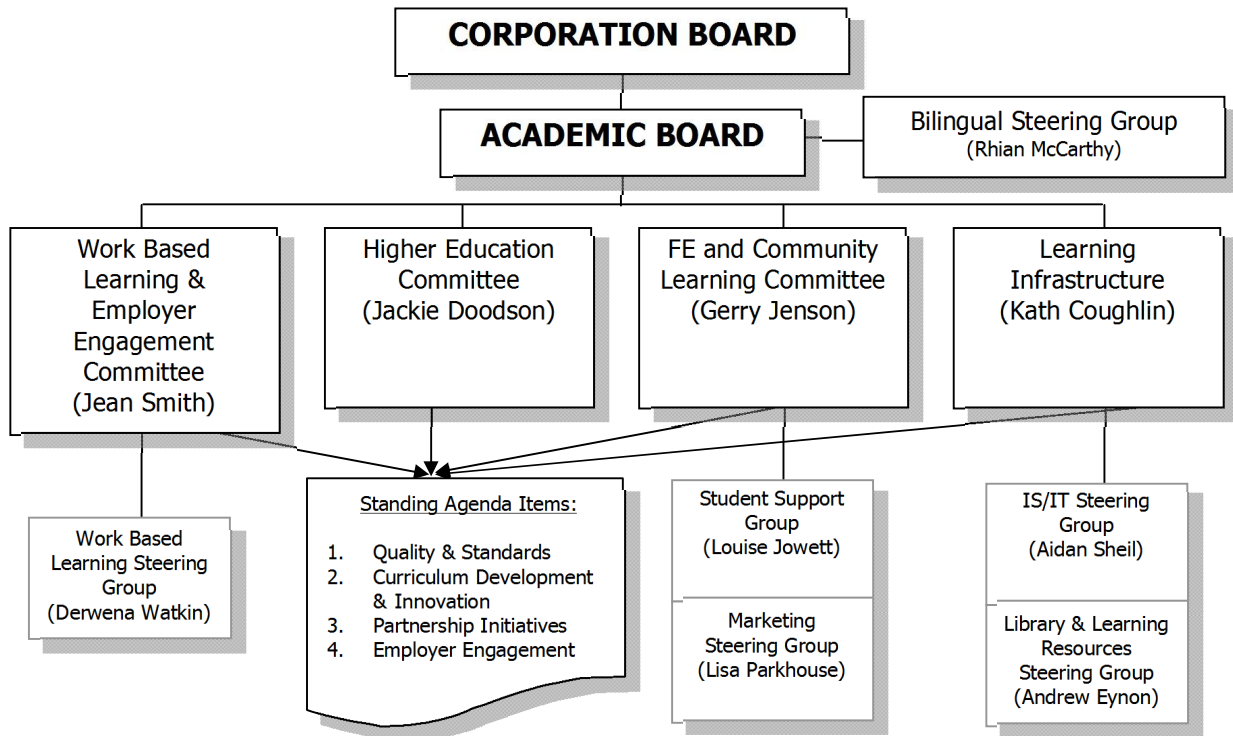


Board Structure:



To accommodate for the discontinuance of various sub -committees it is suggested that the following topics become standing agenda items on each of the four new committees.

- Quality & Standards (incl. Learner Voice Feedback).
- Curriculum development and innovation.
- Partnership initiatives.
- Employer Engagement.

Assistant Principals to Chair each of the main sub -committees. Working feeder committees to be chaired by other senior team members. Academic Board itself will provide the main avenue for all generic quality and staff development related reports. The Diversity and Equality forum and all Human Resource related work will feed directly into the main Board – Employment & Safety Committee. All of the above committees will need to prepare a set of Terms of Reference. All committees, where possible, should be held in the boardroom.

Huw Evans OBE
Principal

MEETING SCHEDULE:

Academic Board Meeting Dates:

- 24 November 2pm Board Room
- 2 March 2pm Boardroom
- 8 June 2pm Boardroom

Learning & Infrastructure Meeting Dates :

- Wednesday 5 November 2008 at 10.00 am in the Board Room
- Wednesday 11 February 2009 at 10.00 am in the Board Room
- Wednesday 20 May 2009 at 10.00 am in the Board Room

HE Committee:

- Friday 24 October 2.00pm Boardroom
- Tuesday 25 November 2.00pm Boardroom
- Tuesday 27 January 2.00pm Boardroom
- Tuesday 21 April 2.00pm Boardroom

FE & Community Learning Committee :

- Tuesday 11th November 2008 at 9.30 -12.00pm Boardroom
- Tuesday 10th February 2009 at 9.30 -12.00pm Boardroom
- Tuesday 19th May 2009 at 9.30 -12.00pm Boardroom

Bilingual Steering Group:

- 22 September 2008 1.00pm (Mon) Boardroom
- 10 November 2008 3.00pm (Mon) Boardroom
- 26 January 2009 3.00pm (Mon) Boardroom
- 16 March 2009 3.00pm (Mon) Boardroom
- 11 May 2009 3.00 pm (Mon) Boardroom
- 22 June 2009 3.00pm (Mon) Boardroom

Employer Engagement Group:

- tba